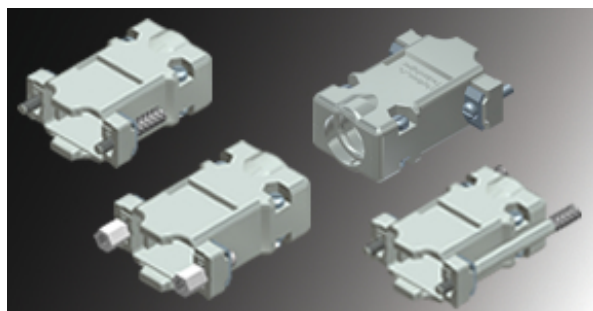


# Metal Straight Exit Covers w/ Large Exit

 [northerntech.com/portfolio-view/future-products-4/](http://northerntech.com/portfolio-view/future-products-4/)



CM Series Two Piece Metal Covers with Large Exit	
<b>FEATURES:</b>	One of The Largest Exits on The Market
	Ideal for specialized Electrical & Electronic Applications <a href="#">LINK TO CAD FILES</a>
	Wide Range of Mating Hardware Available
<b>SPECIFICATIONS:</b>	
Cover Material:	zinc alloy
Cover Finish:	nickel over copper under-plate
* Hardware:	see drawing for material & finish
Compression Insert	Thermoplastic – Black
	<a href="#">CLICK HERE FOR ASSEMBLY INSTRUCTIONS</a> <a href="#">Download Drawing Here</a>

9 POSITION 0.525" Exit with Standard Captive Screws		
Part #	Nortech Logo	
N88E000218L1	with #440 x 7/16 " mating screw – slot head	Packaged
N29E921090L1	with #4-40 x 7/16 " mating screws – slot head	Bulk
Part #	No Logo	
N88E000209L1	with #4-40 x 7/16 " mating screw – slot head	Packaged
N29E821093L1	with #4-40 x 7/16 " mating screws – slot head	Bulk
Part #	Nortech Logo	
N88E000218L	with #4-40 x 1/2" mating screw – slot head	Packaged
N29E921090L	with #4-40 x 1/2" mating screws – slot head	Bulk
Part #	No Logo	

9 POSITION 0.525" Exit with Standard Captive Screws		
Part #	Nortech Logo	
N88E000218L1	with #440 x 7/16 " mating screw – slot head	Packaged
N29E921090L1	with #4-40 x 7/16 " mating screws – slot head	Bulk
Part #	No Logo	
N88E000209L1	with #4-40 x 7/16 " mating screw – slot head	Packaged
N29E821093L1	with #4-40 x 7/16 " mating screws – slot head	Bulk
N88E000209L	with #4-40 x 1/2" mating screw – slot head	Bulk
N29E821093L	with #4-40 x 1/2" mating screw – slot head	Packaged
Part #	Nortech Logo	
N88E000218LPS	with #4-40 x 1/2" mating screw – phillips head	Packaged
N29E921090LPS	with #4-40 x 1/2" mating screw – phillips head	Bulk
Part #	No Logo	
N88E000209LPS	with #4-40 1/2" mating screw – phillips head	Packaged
N29E821093LPS	with #4-40 x 1/2" mating screw – phillips head	Bulk

9 POSITION 0.525" Exit with Metric Captive Screws		
Part #	Nortech Logo	
N88E000218LM25S	with M2.5 x 12.7mm mating screws – slot head	Packaged
N29E921090LM25S	with M2.5 x 12.7mm mating screws – slot head	Bulk
Part #	No Logo	
N88E000209LM25S	with M2.5 x 12.7mm mating screws – slot head	Packaged
N29E821093LM25S	with M2.5 x 12.7mm mating screws – slot head	Bulk
Part #	Nortech Logo	
N88E000218LM26S	with M2.6 x 12.7mm mating screws – slot head	Packaged
N29E921090LM26S	with M2.6 x 12.7mm mating screws – slot head	Bulk
Part #	No Logo	
N88E000209LM26S	with M2.6 x 12.7mm mating screws – slot head	Packaged
N29E821093LM26S	with M2.6 x 12.7mm mating screws – slot head	Bulk
Part #	Nortech Logo	

9 POSITION 0.525" Exit with Metric Captive Screws		
N88E000218LM3S	with M3 x 12.7mm mating screws – slot head	Packaged
N29E921090LM3S	with M3 x 12.7mm mating screws – slot head	Bulk
Part #	No Logo	
N88E000209LM3S	with M3 x 12.7mm mating screws – slot head	Packaged
N29E821093LM3S	with M3 x 12.7mm mating screws – slot head	Bulk

9 POSITION 0.525" Exit with #4-40 Standard Thumbscrews		
Part #	Nortech Logo	
N88E000218LT4S	with #4-40 x 0.84 thumbscrews – slot head	Packaged
N29E921090LT4S	with #4-40 x 0.84 thumbscrews – slot head	Bulk
Part #	No Logo	
N88E000209LT4S	with #4-40 x 0.84 thumbscrews – slot head	Packaged
N29E821093LT4S	with #4-40 x 0.84 thumbscrews – slot head	Bulk

9 POSITION 0.525" Exit with Hex Inverter Kit (Converts Mating Area to Female)		
Part #	Nortech Logo	
N88E000218LHX	with hex inverter kit	Packaged
N29E921090LHX	with hex inverter kit	Bulk
Part #	No Logo	
N88E000209LHX	with hex inverter kit	Bulk
N29E821093LHX	with hex inverter kit	

9 POSITION 0.525" Exit with Metric Thumbscrews		
Part #	Description	
Contact Sales	with M2.5 thumbscrews	Available in Nortech and No Logo Versions
Contact Sales	with M2.6 thumbscrews	Available in Nortech and No Logo Versions
Contact Sales	with M3 thumbscrews	Available in Nortech and No Logo Versions