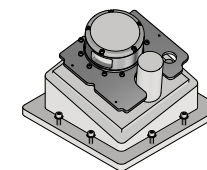
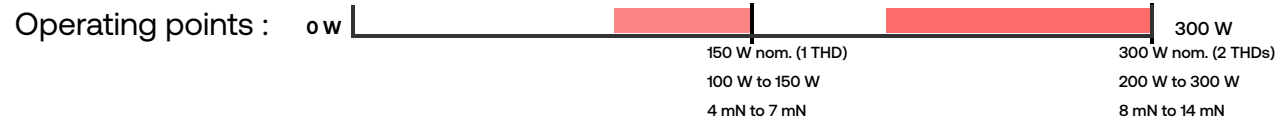


spaceware™ - micro cluster² XL *Xenon*

Qualified 2023

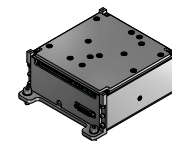
Max Mass : 10,1 kg dry | 22,5 kg wet

Max Total Impulse : 115 kNs



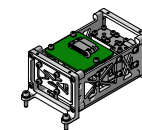
2x Thruster Head Micro (THD)

A thermally decoupled 150W-class Hall Thruster
Tilt is adjustable towards Center of Mass on a wide extent. Very low thermal influence on the platform.
The clustered version opens up the door to AOCS capabilities, and allows an optimal performance in all the throttling scale.



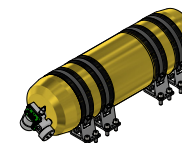
2x Thruster Control Unit (TCU)

Flush-mounted control unit for spaceware™ - nano and micro



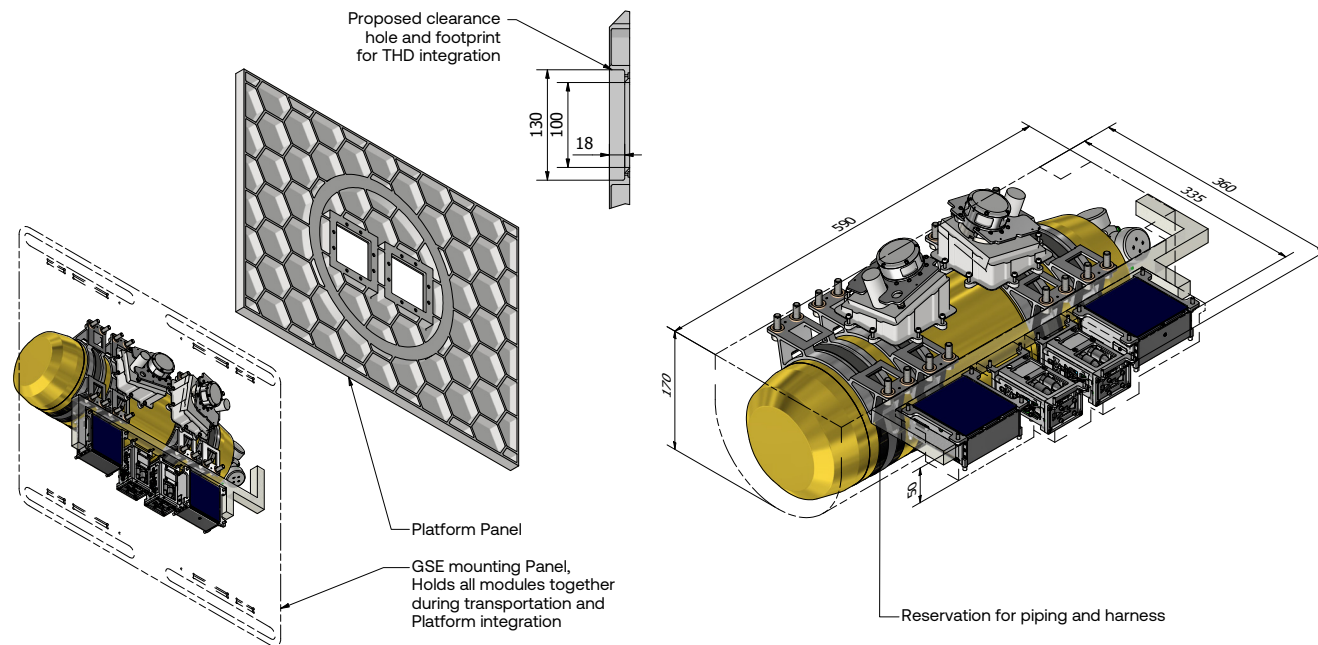
2x Propellant Management System (PMS)

Universal massflow controller for the spaceware™ product line



1x Tank Assembly 6.5L (TNK)

Flush-mounted standard pressure vessel assembly
With optionnal thermal management. Fully certified, it is shipped already filled in.



This is just an example of form factor arrangement. Our product is flexible and can be adapted to meet most customers requirements.