

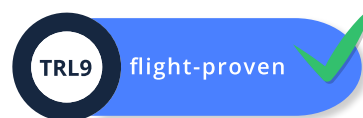


L-Band Splitter

for CubeSat nanosatellites applications

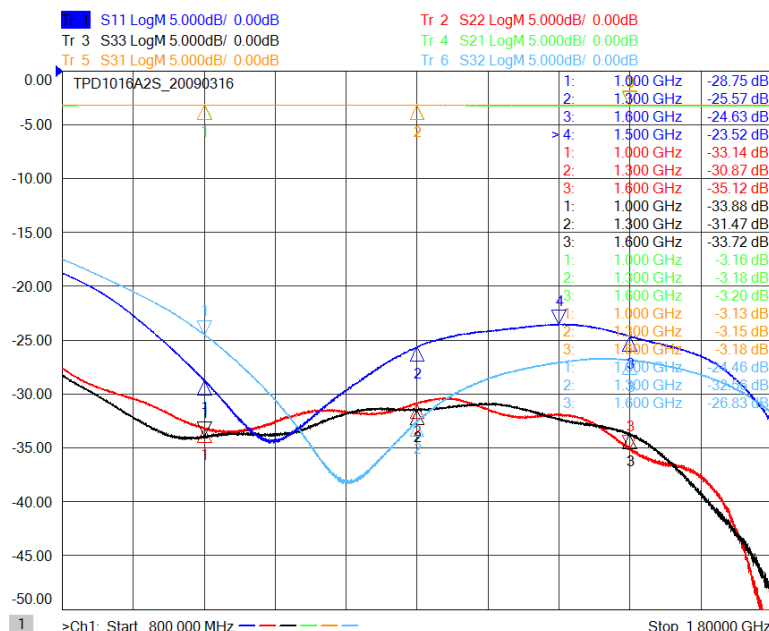
ABOUT

WiRan Power Dividers allow for easy splitting of RF power into two channels, providing excellent phase & amplitude balance, low Insertion Loss and VSWR factors and high isolation between channels.



FEATURES

- compliant with the CubeSat nanosatellite standard
- small dimensions, perfect for compact satellites
- alodine coated lightweight aluminum housing
- wide operational temperature range



S parameters available on request

WiRan sp. z o.o.

Pomieranian Science and Technology Park, Al. Zwycięstwa 96/98

81-451 Gdynia, Poland

+48 58 663 10 10

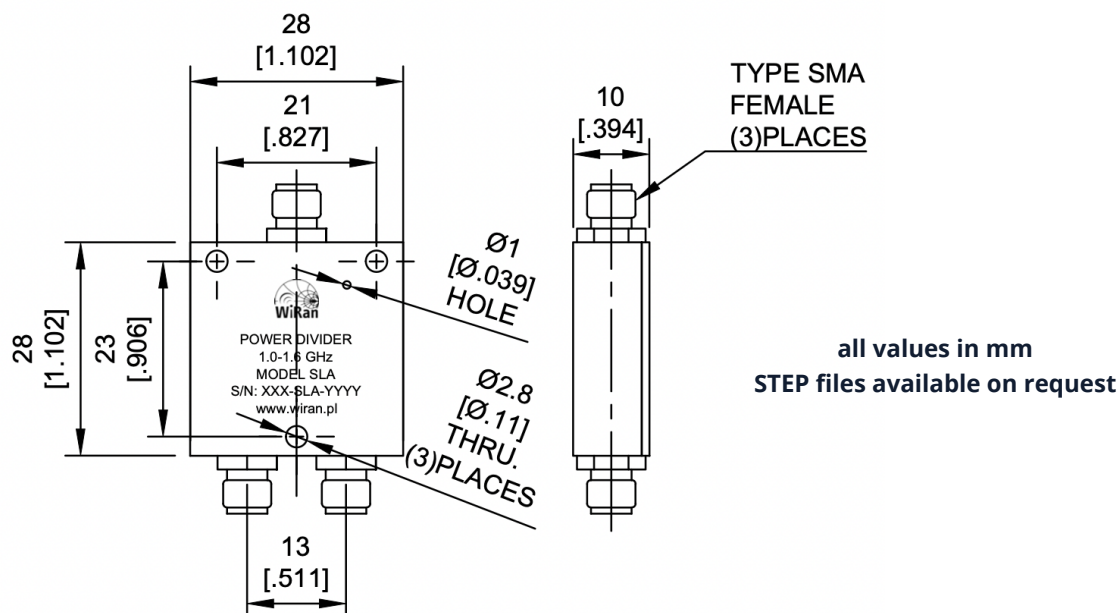
wiran.pl, info@wiran.pl



L-Band Splitter

for CubeSat nanosatellites applications

Frequency Range	1-1.6 GHz
Insertion Loss	$\leq 0.35\text{dB}$ (Above 3.01dB Split)
VSWR	Input $\leq 1.20:1$ Output $\leq 1.15:1$
Isolation	$\geq 22\text{dB}$
Amplitude Balance	$\leq \pm 0.2\text{dB}$
Phase Balance	$\leq \pm 2^\circ$
Power Handling	Forward $\leq 10\text{Watt}$; Reversed $\leq 5\text{Watt}$
Operating Temperature	$-55 \div +85^\circ\text{C}$
Weight	20g
Impedance	50 Ω
Port Connectors	SMA-Female



Ordering code	Description
SLA	L band splitter 1000-1600MHz, CubeSat compatible