

spaceware™ - nano L *Xenon*

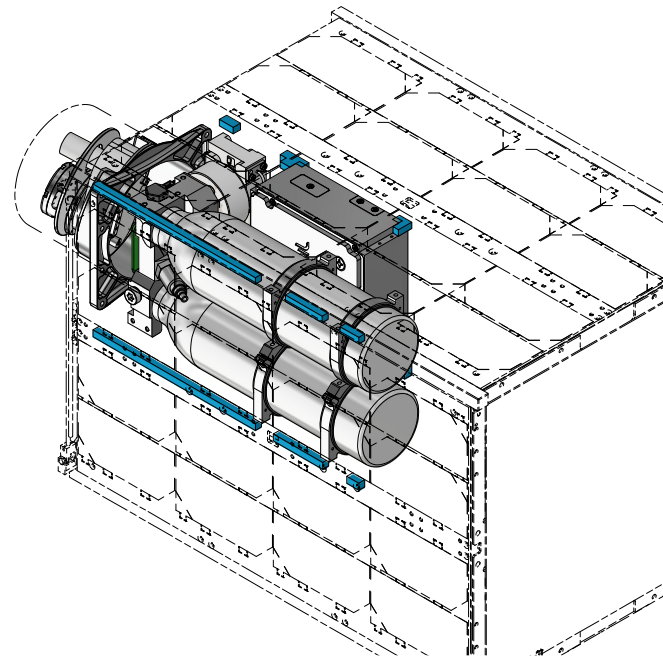
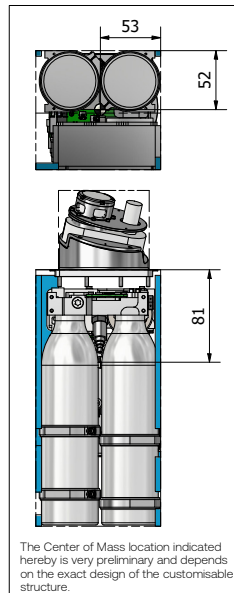
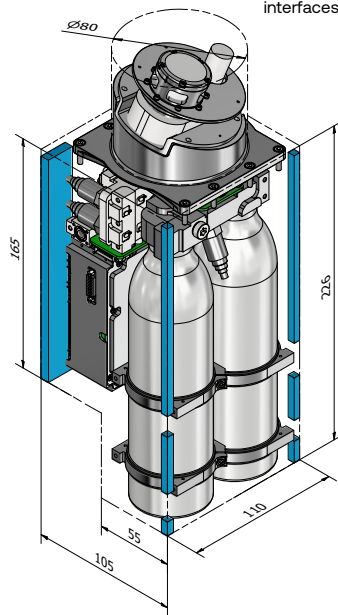
Qualified H1 2023

Max Mass (including 0,1 kg provision for structures): 2,7 kg dry | 3,4 kg wet

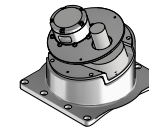
Max Total Impulse : 5,4 kNs

Operating points : 0 W |  100 W

The blue zones represent the customisable part of our structure in which the mechanical interfaces with the platform will be machined.

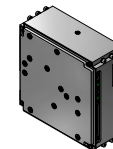


This is just an example of form factor arrangement. Our product is flexible and can be adapted to meet most customers requirements.



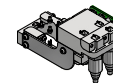
1x Thruster Head Nano (THD)

A tuna-can compatible 60W-class Hall Thruster
Tilt is adjustable towards Center of Mass for 6U to 20U platforms. Very low thermal influence on the platform



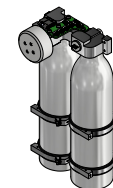
1x Thruster Control Unit (TCU)

Frame-mounted control unit for spaceware™ - nano and micro
Can be mounted separately from the thruster body



1x Propellant Management System (PMS)

Nano-class massflow controller



1x Tank Bundle, nano L (TNK)

A cubesat-sized tank bundle
Optimal form factor and performances. Fully certified, it is shipped already filled in. With optionnal thermal management.