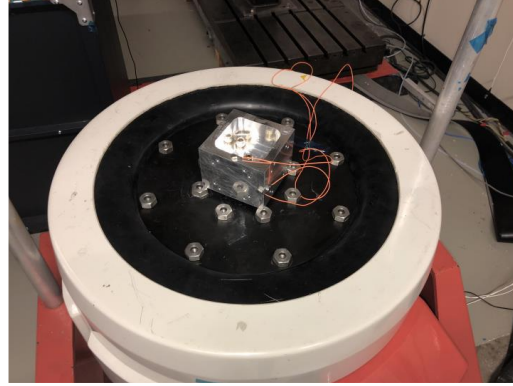




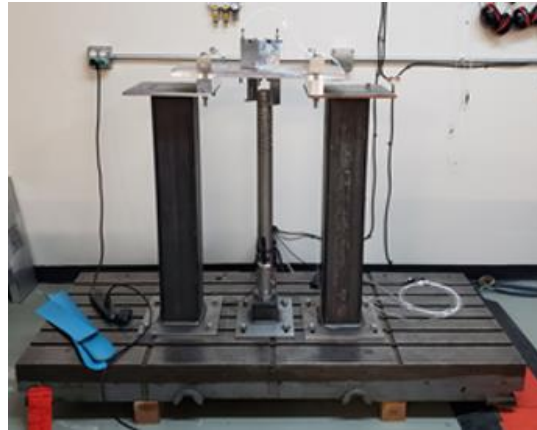
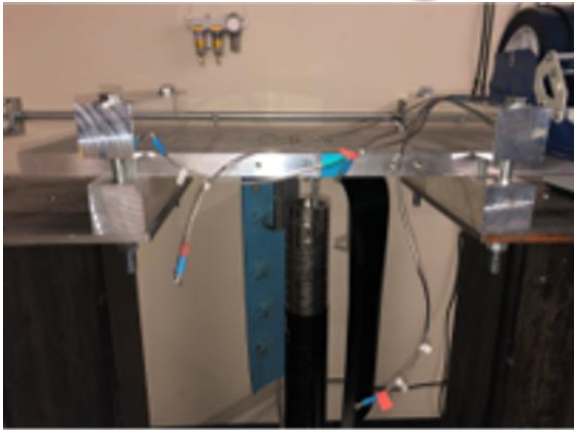
Vibration Testing



PARAMETERS

- + Single axis table, Z-axis requires customer adapter plate
- + Maximum Static Load: 350 lbs.
- + Typical Levels: ~45 Grms random vbe for small form factor units (~1U and <2.5kg)
- + Accelerometers and vibration data recording provided

Shock Testing



PARAMETERS

- + Shock cannon fixture with 10,000 peak Gs
- + Shock generated via pneumatic firing of a metal slug. Shock profile tuned using changeable anvil materials, clamping distances, and firing pressure.
- + Customizable mounting area